

The background of the advertisement is a stylized, futuristic industrial scene. It features a dark blue and black color palette with glowing cyan and white lines representing data and machinery. In the center, there are two large, glowing wireframe models of industrial motors or actuators. One is a larger, more complex unit on the left, and the other is a smaller, more compact unit on the right. They are surrounded by various industrial components, including what looks like a conveyor belt system at the bottom. The background is filled with binary code (0s and 1s) and geometric patterns, giving it a high-tech, digital feel. The Siemens logo and tagline are in the top left, and the product name and slogan are in a large cyan box on the right. The website URL is at the bottom right.

**SIEMENS**  
*Ingenuity for life*

# SINAMICS G115D

## Versatile. Rugged. Distributed.

Innovative system solutions for horizontal  
motion control applications.

[usa.siemens.com/sinamics-g115d](http://usa.siemens.com/sinamics-g115d)

# SINAMICS G115D

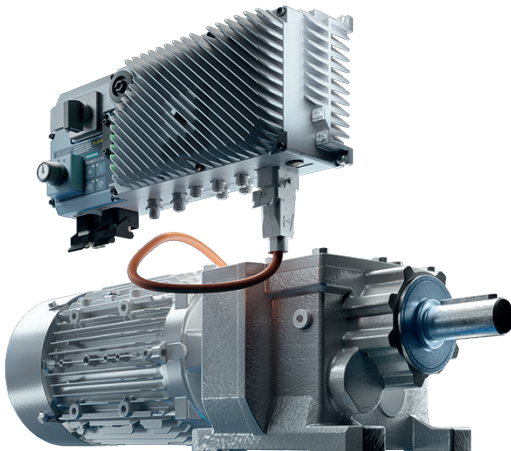
Less effort. More performance.



The SINAMICS G115D is more than just another drive—it's an optimally matched system solution consisting of a highly efficient geared motor and an innovative, low-profile drive. The system has been optimized exclusively for energy- and cost-efficient horizontal motion applications such as conveyor belts, sorting systems, baggage and freight conveyor systems, warehouse and distribution logistics, mail sorting and parcel distribution.

## The most important advantages include:

- One complete system that's extremely easy to configure and easy to install
- All components are included and pre-configured from the factory
- Minimized space requirement, optimal performance
- Full TIA integration and MindSphere connectivity
- Prepared for operation under harsh conditions (down to  $-30^{\circ}\text{C}$  and with degree of protection up to IP66 or UL Type 4X)
- Extremely versatile (wall- and motor-mounted versions, identical electronic module for easy replacement)
- Simple on-site service of mechanical and electronic modules



# Versatile. Rugged. Distributed.

## The new distributed drive system

### SINAMICS G115D is versatile

- SINAMICS G115D stands for simple configuration, easy ordering and easy commissioning. As a comprehensive distributed drive system, it's the simple solution to challenge all the horizontal conveyor applications.
- G115D is fully implemented in the Totally Integrated Automation (TIA) environment which seamlessly connects hardware, software and services. All of the individual components are harmonized and coordinated with one another.



### SINAMICS G115D is rugged

- With its robust design, users benefit from a high degree of protection up to IP66 (or UL Type 4X) so that G115D can be operated in harsh environments while maintaining space requirements with a reduced drive size.
- G115D offers reliable operation with extended temperature range from  $-30$  to  $55^{\circ}\text{C}$  ( $-22$  to  $131^{\circ}\text{F}$ ).



### SINAMICS G115D is distributed

- The G115D drive system belongs to a family of distributed drives.
- The distributed system approach allows users to individually control motors closer to the application process saving space, reducing the number of motor cables and improving electromagnetic compatibility behavior and heat losses.





# SINAMICS G115D

## Fields of application

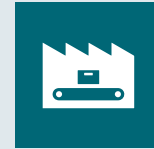
SINAMICS distributed drives are ideally suited for industrial conveyor systems and help you save not only wiring and installation costs, but also room in control cabinets. Our distributed drives rely on proven technology and are perfect for use in the automotive industry, distribution logistics, airports and every other industrial environment where long distances and space have to be considered.



### Intra-logistics

Conveyor technology is essential for the organization, control, implementation and optimization of the internal goods and material flow, as well as for logistics in industry and trade. Choose from our flexible and efficient solutions for your conveyor technology requirements including:

Rollers, belt and chain conveyors, corner turntables, turntables, travelling trolleys



### Automotive

Conveyor technology is needed at many stations within automotive production processes for transporting car parts. Rely on the most modern solutions for every conveyor technology requirement. For example:

Roll conveyors, turntables, travelling trolleys



### Airports

Airport services depend heavily on conveyor technology. Efficient baggage handling systems increase throughput and help to manage steadily rising demands while fulfilling laws and regulations. Keep your airport running with solutions such as:

Baggage handling systems, tray-based conveyor lines/systems for baggage, cargo handling systems, sortation systems



### Food and Beverage

Choosing the right components for machines increases both flexibility and efficiency in food production. Optimize your service with complete conveyor solutions including:

Conveyor belts, cross belt sortation systems, gapping belt conveyors

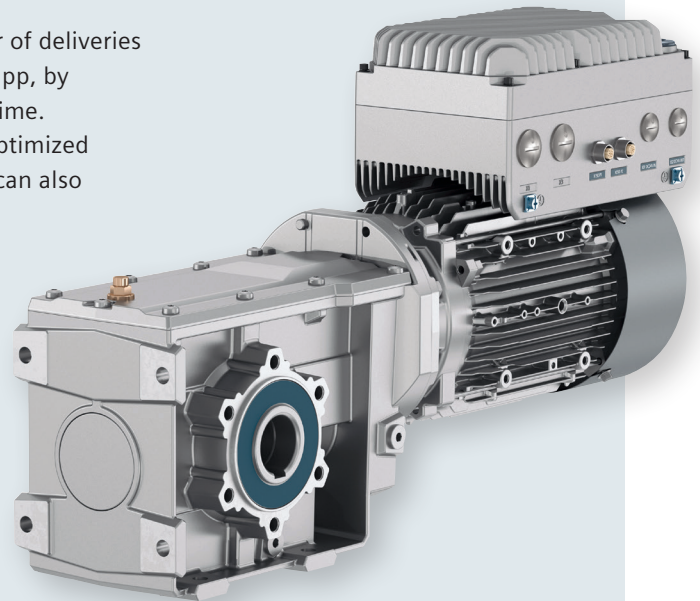
# Very economical

## Today and tomorrow

Lifecycle costs in intra-logistics depend largely upon the efficient design, commissioning and operation of conveyor belt drive systems. With its unique combination of gearbox, motor and drive, the new SINAMICS G115D enables easy project planning and commissioning with proven software tools and is supplied completely assembled by our factory. Its Smart Access Module (SAM) provides wireless system connectivity for added convenience.

Wherever a growing number of demands, parcel deliveries and more have to be handled while space is becoming increasingly scarce, the SINAMICS G115D comes into its own. It's a very compact and reliable solution with the ability to optimize performance.

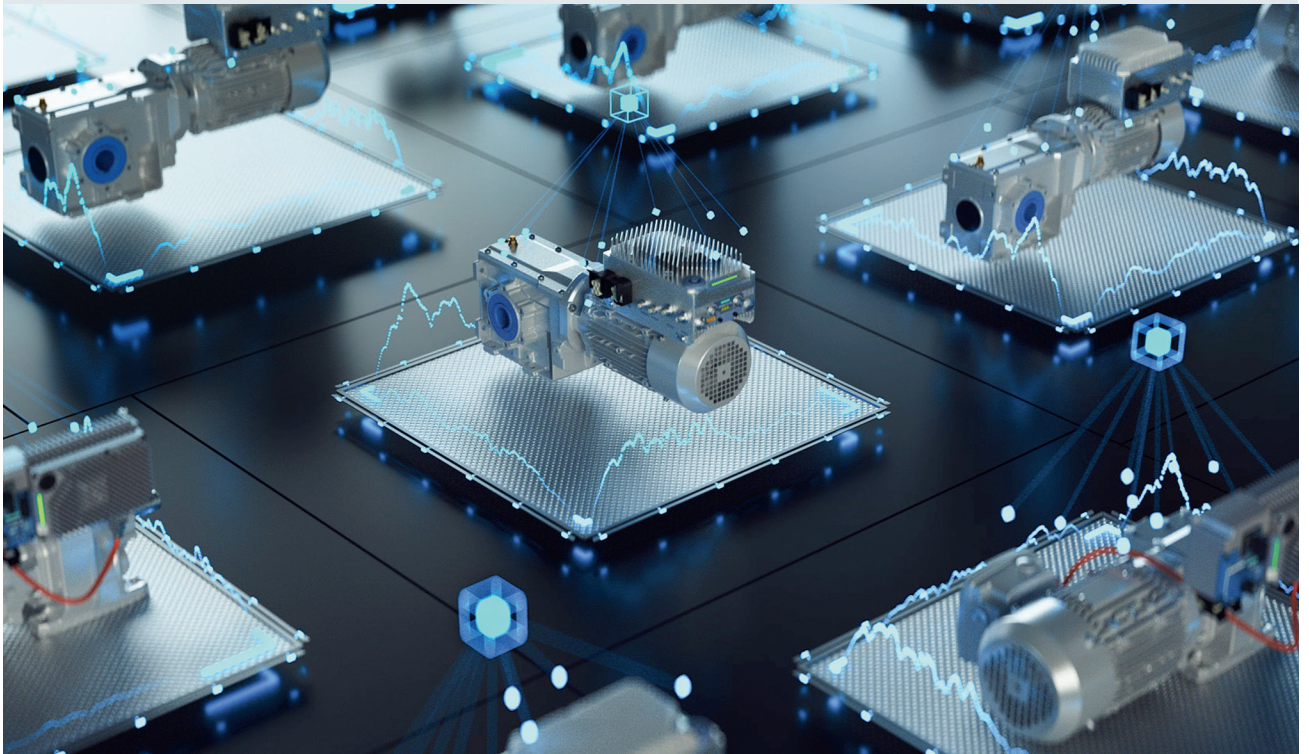
This is achieved, for example, by monitoring the number of deliveries in a given time with the Analyze MyDrives MindSphere app, by streamlining workflows, and by predicting future downtime. And in terms of energy efficiency, SINAMICS G115D is optimized for asynchronous IE3 and IE4 reluctance motors, which can also be monitored very easily with Analyze MyDrives.



# Designed for success

## Clever ideas from a reliable partner

The SINAMICS G115D is not only equipped with very reliable components, it also features a service-friendly design. The new electronic module is a good example of this. It's identical for the wall- and motor-mounted versions and can be easily disconnected and replaced for offline service. This drastically increases the availability of the entire system and optimizes your operating costs.



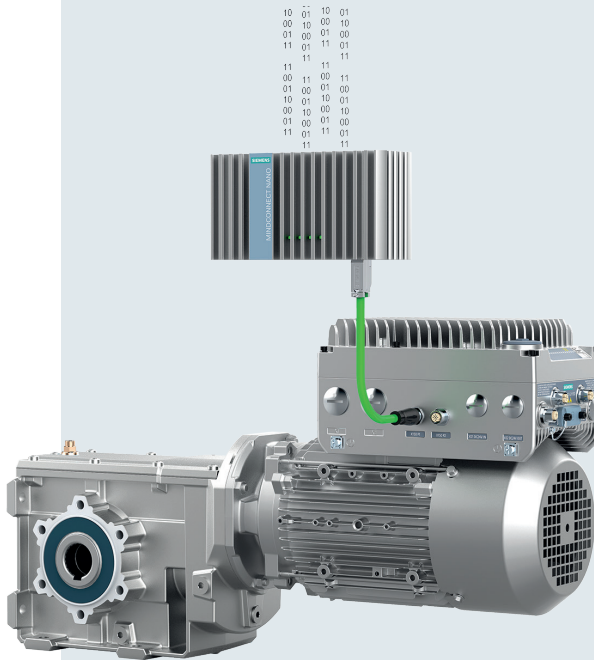


# Ready for the Cloud

## Advanced connectivity for improved operation

The SINAMICS G115D can be easily connected to MindSphere, the open IoT operating system from Siemens, to deliver operation and condition data for further analysis and optimization purposes.

To achieve this, data is sent either directly from the SIMATIC S7-1500 PLC controller, the MindConnect IoT 2040 device or the SIMATIC IPC227E interface. Once in the Cloud, data can be processed with Analyze MyDrives to obtain valuable insights and suggestions for improved operation.





# Easy configuration

Available tool set-up for the SINAMICS G115D

## DT Configurator

The Siemens Drive Technology Configurator (DT Configurator) supports you when selecting the optimum product version for your specific application. Pre-selected product groups, precise navigation with selection menus or direct product selection through entry of the article number makes configuration quick, efficient and convenient.

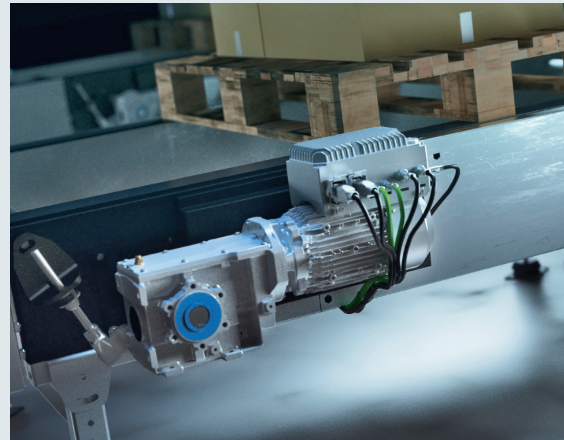
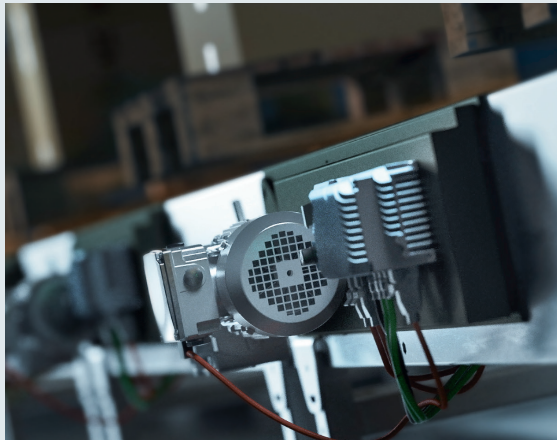
[siemens.com/dt-configurator](https://www.siemens.com/dt-configurator)



## TIA Selection Tool (SIZER)

The TIA Selection Tool helps you to get the most out of your portfolio quickly and easily. Without detailed product knowledge needed, the TIA Selection Tool supports project planners, beginners and experts alike.

[siemens.com/tst](https://www.siemens.com/tst)



# Our service package

Extended coverage for up to 4 years

## Dedicated service packages

To further reduce lifecycle costs, we offer special service packages for registered SINAMICS G115D solutions. These service packages extend the period for repair or replacement to up to 4 years for both wall-mounted and motor-mounted systems. In addition, the first half-year after the normal 18 months warranty period is free-of-charge with product registration. Afterwards, additional extended coverage is available as an option offering maximum investment protection and expert support over the entire lifecycle of the drive system.



## Your advantages

- Security for up to 4 years, with six months free-of-charge service with product registration
- Maximum investment protection
- Expert support over the entire drive system's lifecycle

Standard warranty  
18 months from shipment  
(12 months from operation)

+ 6 months with  
product registration

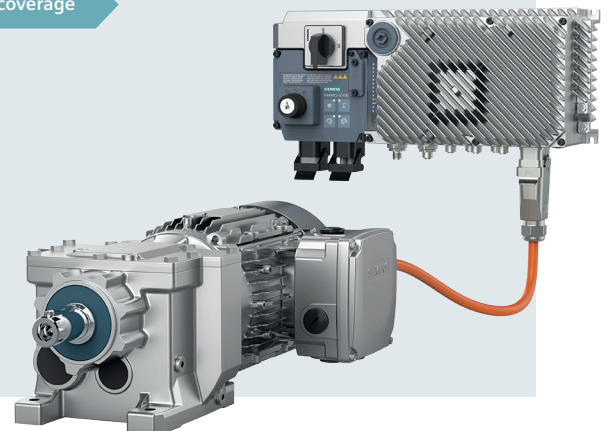
+ 1 year extended coverage

+ 2 year extended coverage

## Register online

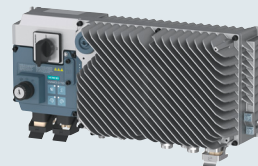
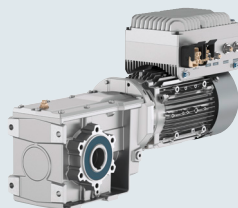
Register your SINAMICS G115D online and obtain our service package free-of-charge for the first six months:

[myregistration.siemens.com](https://myregistration.siemens.com)



# SINAMICS G115D

## Technical information



	Motor-mounted	Wall-mounted
<b>Target group and applications</b>	Horizontal motion—simple conveyor technology for intra-logistics, airports, automotive and food and beverage	
<b>Supply voltage and power range</b>	3AC 380–480V: 0.37–4 kW/0.5–5 hp FSA up to 1.5 kW, FSB up to 4 kW	3AC 380–480V: 0.37–7.5 kW/0.5–10 hp FSA up to 1.5 kW, FSB up to 4 kW, FSC up to 7.5 kW
<b>EMC</b>	EMC Category C2/removal of functional grounding (IT system) possible	
<b>Degree of protection</b>	IP55 (limited by motor) or optional IP65/UL rating follows geared motor (compact system)	IP65 (connector version) or IP66 (gland version)/UL type 4X
<b>Cooling</b>	Convection	Convection ≥ 4 kW with fan (FSC size)
<b>Ambient temperatures</b>	–30 to 40° C / to 55° C ( > 40° C with derating)	
<b>Motor cable length</b>	—	15 m (EMC Category C2)
<b>Motor control</b>	U/f, FCC, ECO, SLVC sensorless vector control	
<b>Overload capability</b>	200% 3 s, 150% 57 s, every 300 s	
<b>Inputs/outputs</b>	4 DI, 2 DO (can also be used as DI), 1 F-DI (from 2DI), HTL-Encoder interface (from 2DI)	
<b>Communication</b>	PROFINET, EtherNet/IP, AS-I or IO controlled	
<b>I/O configuration</b>	Selectable and pre-defined I/O macro configurations	
<b>Fixed setpoints</b>	Up to 16 fixed setpoints selected via digital inputs	
<b>Ramp functions</b>	Ramps (up/down) can be set separately; Rounding-off ramp function to guarantee soft starting and stopping; Available ramp switchover in operation	
<b>Brake control</b>	180V DC motor holding brake available as standard; optional AC 400V brake for wall-mounted DC braking	
<b>Application functions</b>	Integrated firmware functions for conveyor technology (conveyors, corner turntable, corner table, travelling trolley)	
<b>Logical functions</b>	Yes, integrated free function blocks (FFB)	
<b>Safety Integrated</b>	STO SIL 2/PROFIsafe	
<b>Memory card (SD card)</b>	Yes	
<b>TIA Portal integration</b>	Yes, complete system (including G115D drive and 2KJ8 geared motor)	
<b>Web-server</b>	Yes, via SINAMICS Smart Access Module (SAM)	



**Published by  
Siemens Industry, Inc.**

5300 Triangle Parkway  
Norcross, GA 30092

(770) 871-3800

Order No. DRBR-G115D-0121

Printed in USA  
© 2021 Siemens Industry, Inc.

[usa.siemens.com/motioncontrol](http://usa.siemens.com/motioncontrol)

This brochure contains only general descriptions or performance features, which do not always apply in the manner described in concrete application situations or may change as the products undergo further development. Performance features are valid only if they are formally agreed upon when the contract is closed.

Siemens is a registered trademark of Siemens AG. Product names mentioned may be trademarks or registered trademarks of their respective companies.

Specifications are subject to change without notice.