

INSTRUMENTATION & CONTROL SYSTEMS



**PROCESS
AUTOMATION
SOLUTIONS**



ATS Worldwide

ATS has mastered automation across diverse industries and processes. The vast experience and resources gained from being a world leader in automation directly benefits every project.

STRENGTH IN NUMBERS

Delivering the combined expertise of ATS, sortimat and Process Automation Solutions.

GLOBAL FOOTPRINT

27 manufacturing facilities and 47 support locations around the globe

EXPERIENCE

Successful completion of over 22,000 projects worldwide

INNOVATION

A world leader in creating benchmark automation solutions across diverse sectors

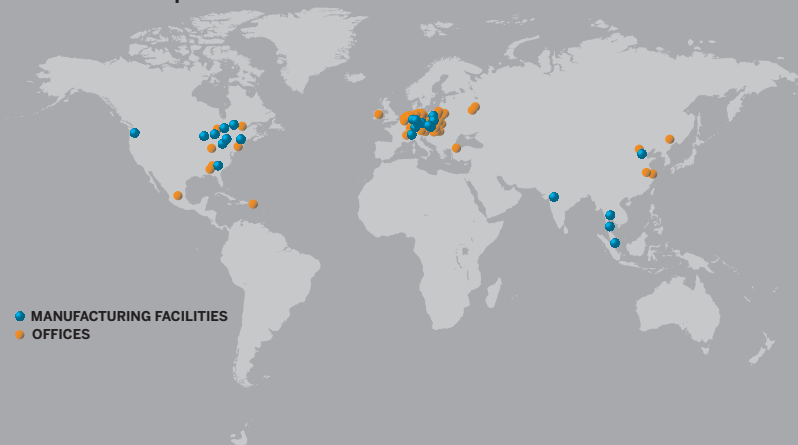
SCALE OF RESOURCES

A knowledge base that includes 3,500 employees and a vast network of highly skilled partners and suppliers

FINANCIAL STRENGTH

Positive financial results and a healthy balance sheet solidifies ATS as a strong partner with a clear intention for long term relationships

Global presence



Delivering state of the art

THE BENEFITS OF KNOWLEDGE SHARING:

- / Enhanced problem solving
- / Strengthened capabilities
- / Enhanced quality through lessons learned



MULTI-SECTOR EXPERIENCE

We successfully deliver automation solutions across diverse industries

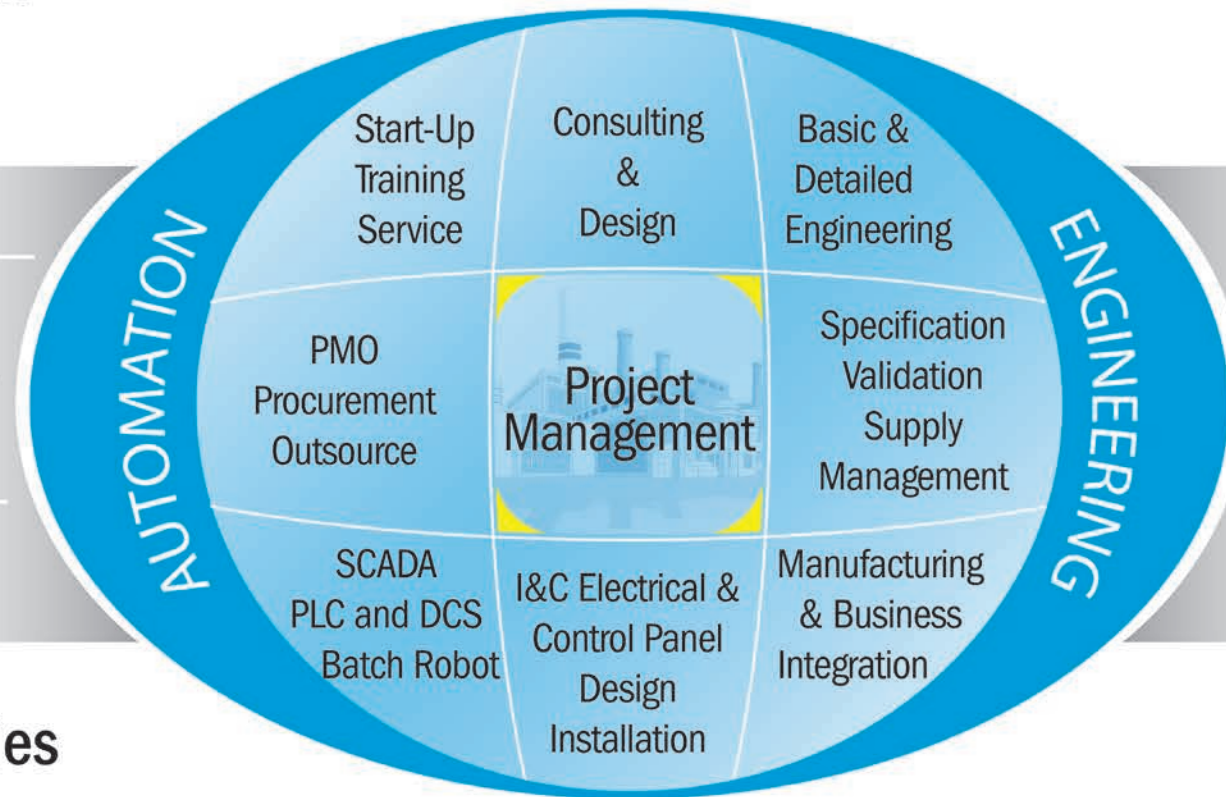
- / Chemical
- / Pharma/Biotech
- / Automotive
- / Aerospace
- / Food and Beverage
- / Energy
- / Fine Chemicals
- / Microelectronics
- / Oil & Gas
- / Water & Wastewater
- / Other industries

Main Automation Contractor (MAC)

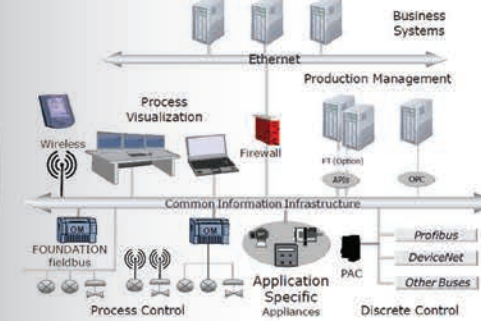


Process Control Systems

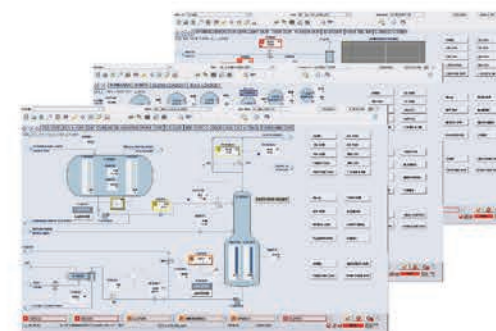
OEMs
Equipment Suppliers
Engineering Contractors
Process Control Systems



Facility Monitoring and Control Systems (FMCS)



Network Design and Integration



RANGE OF MAC SERVICES

Whether your firm requires renovation, expansion, or turnkey construction of new facility control systems, PA Solutions will devise the most economical and effective solutions to meet your budget, schedule and production targets. PA Solutions offers a full set of in-house MAC services, fully customized to meet your facility needs.

CONSULTING:

- / Auditing
- / Control Systems Development
- / Scale-up
- / cGMP and FDA/EU Compliance
- / Economic Analysis
- / Feasibility Studies
- / Concept Studies
- / Process Optimization
- / Qualification/Validation
- / Risk Analysis

ENGINEERING AND DESIGN:

- / Project Management
- / Electrical Engineering
- / Instrumentation and Controls
- / Automation
- / Life Safety Systems
- / AutoCad
- / BIM/Revit

CONSTRUCTION:

- / Cost Estimating
- / Scheduling
- / Procurement
- / Construction Administration
- / Construction Management
- / Site Management
- / Safety Program Administration
- / Integrated Commissioning
- / Qualification Services
- / Self-perform I&C Construction
- / Instrument Calibration

BOP and Utilities



The people behind the projects

When you work with PA Solutions on your project you are backed by our experienced, professional management team and hundreds of skilled experts worldwide. The range of core competencies offered by our diverse global workforce means that we can find the perfect combination of skills to complement any project.

The comprehensive support you need

Our program managers work seamlessly with your experts to ensure that all required skill sets are well represented on the project team. In addition, we have access to a vast network of qualified, audited partners who can supply the components or expertise needed to fill any gaps. We take ownership of guiding the team, raising any issues for joint collaboration and resolution to ensure the project is delivered on time and on budget.

PA SOLUTIONS CORE COMPETENCIES:

- / Project Management
- / Instrumentation & Control Systems Engineering
- / Programming
- / Graphics Design
- / Construction Management
- / Commissioning
- / Startup Support



Achieving best in class

TECHNOLOGY PORTFOLIO

Years of experience supporting automation projects means that we have built up an extensive array of technology that will work for you.



A DISCIPLINED APPROACH TO PROGRAM EXECUTION

Our program management group delivers extensive project planning, thorough communications and customer advocacy. All risks are carefully identified and assessed with detailed recommendations for mitigation.



TURNKEY SOLUTIONS

We will take responsibility for ensuring you have the sophisticated equipment and services needed to support your project.



SCALING RESOURCES TO MEET REQUIREMENTS

We can efficiently ramp up staff and resources to meet aggressive timelines.

A proven process

Our program process is modelled around the Project Management Institute's 5 phased project lifecycle. A combination of proven methods and global best practices ensures successful implementation of your requirements.

5 PHASES IN THE PROJECT LIFECYCLE



Instrumentation & Control System offices nearest you:

/Albany, NY

/Boston, MA

/Chicago, IL

/Danbury, CT

/Greenville, SC

/Indianapolis, IN

/Phoenix, AZ

/Rio Rancho, NM

/San Francisco, CA

/Mexico City, Mexico

/San Juan, Puerto Rico

/Montreal, Quebec, Canada



**PROCESS
AUTOMATION
SOLUTIONS** TM

an  company



MAIN OFFICE:

300 Executive Center Drive
Darlington Building, Suite 101
Greenville, SC 29615
T (864) 297-6201
F (864) 335-9253

CONTACT:

John Moll, Director of Instrumentation & Controls
T (864) 528-5859
john.moll@pa-ats.com

Bob Ray, Director of Southeast Operations
T (864) 528-5880
bob.ray@pa-ats.com