



Efficient Always

PHARMACEUTICAL AND LIFE SCIENCE

Automating your future, **Today**

PHARMACEUTICAL AND LIFE SCIENCE SOLUTIONS

Cotmac provides process automation solutions in the Pharmaceutical Industry



The range of solutions includes:

- Design engineering
- Automation panels
- Software development
- Hardware supply
- Onsite services
- Training

Automating your future, **Today**

PHARMACEUTICAL AND LIFE SCIENCE SOLUTIONS

Cotmac expertise in Pharma processes



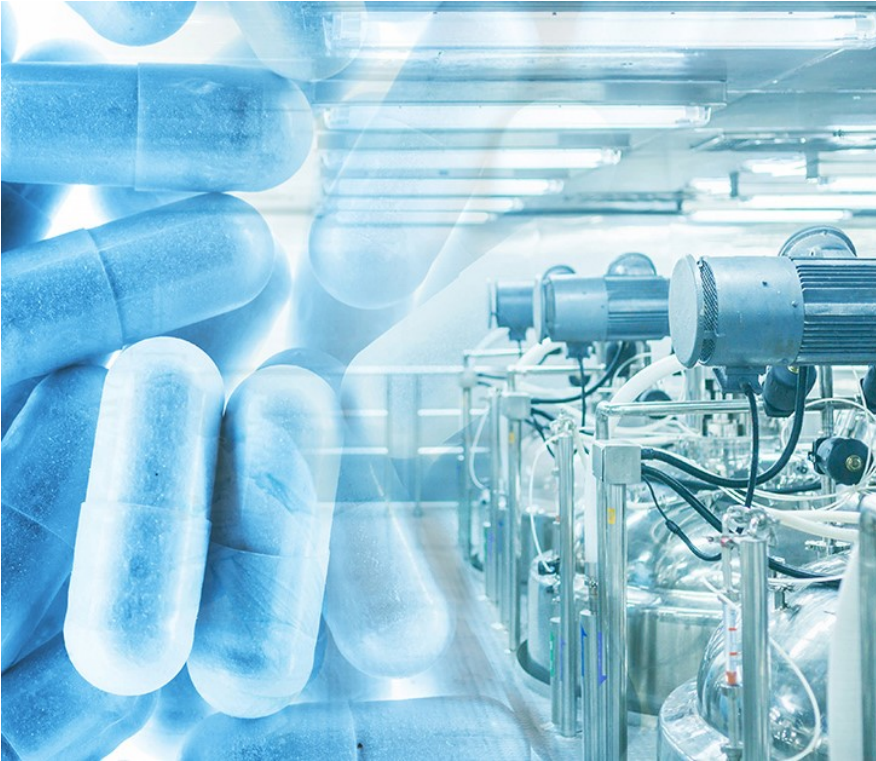
The range pharma process includes:

- Reactors / API Process
- Slurry Process
- Fermentation Process
- Biopharma Process

Automating your future, **Today**

PHARMACEUTICAL AND LIFE SCIENCE SOLUTIONS

Project References



Major projects done in Pharma Industry :

- Dr. Reddy's Laboratories, Hyderabad
- MJ Biotech Pvt Ltd, Pune
- Mylan Laboratories Ltd, Nashik
- Abbott India Ltd, Baddi
- ACME Pharmaceuticals, Bangladesh
- Sentiss Pharma Pvt Ltd, Baddi
- Reliance Life Science, Nashik
- Biocon Ltd, Bangalore
- Biocon Sdn. Bhd, Malaysia

Automating your future, **Today**

PHARMACEUTICAL AND LIFE SCIENCE SOLUTIONS

Major projects Executed for ACME Laboratories Ltd., Bangladesh

Project Scope :

- Design and Supply of Automation System
- Engineering , Instrumentation and Electrical Design
- Application Software – PCS7
- Start-up, Commissioning and Handover
- Training

Details :

- Inputs/Outputs –1500 Nos

Solution :

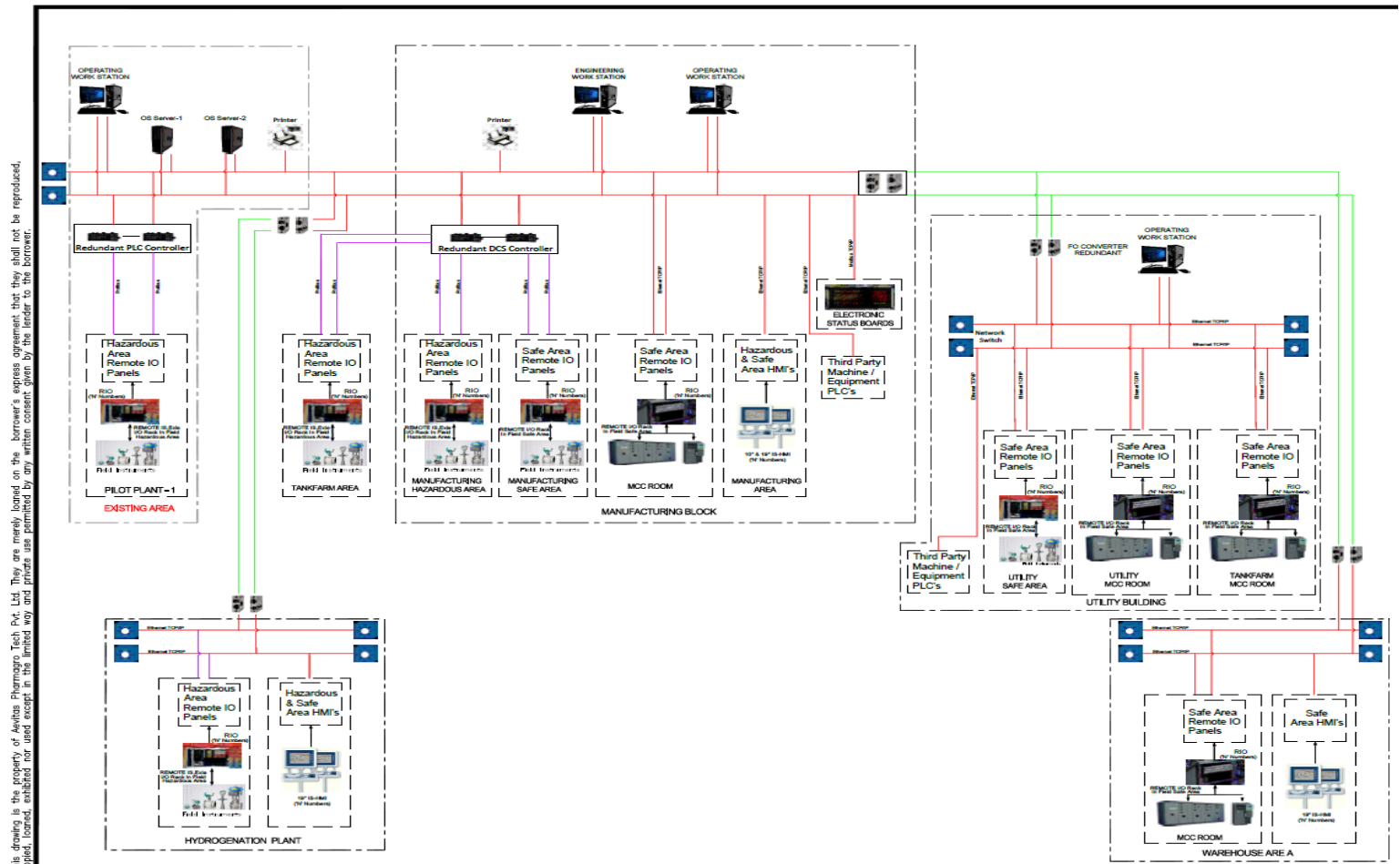
- SIMATIC Logon, Electronic Signature etc. With Full 21CFR Part 11 Compliance
- Client Server Model With Server Redundancy
- Configuration of HART Devices
- ZONE-01 Architecture and ATEX certification
- Pharma Batch Report

Automating your future, Today

Efficient Always

PHARMACEUTICAL AND LIFE SCIENCE SOLUTIONS

System Architecture - ACME Laboratories, Bangladesh



This drawing is the property of Aethos Pharmaagro Tech Pvt. Ltd. They are merely loaned on the borrower's express agreement that they shall not be reproduced, copied, loaned, exhibited nor used except in the limited way and private use permitted by any written consent given by the lender to the borrower.

Automating your future, **Today**

PHARMACEUTICAL AND LIFE SCIENCE SOLUTIONS

Major projects Executed for Mylan Laboratories Ltd., Nashik

Project Scope :

- Design and Supply of Automation System
- Engineering , Instrumentation and Electrical Design
- Application Software – WinCC 8.0, Step7
- Start-up, Commissioning and Handover
- Training

Details :

- Inputs/Outputs –200 Nos

Solution :

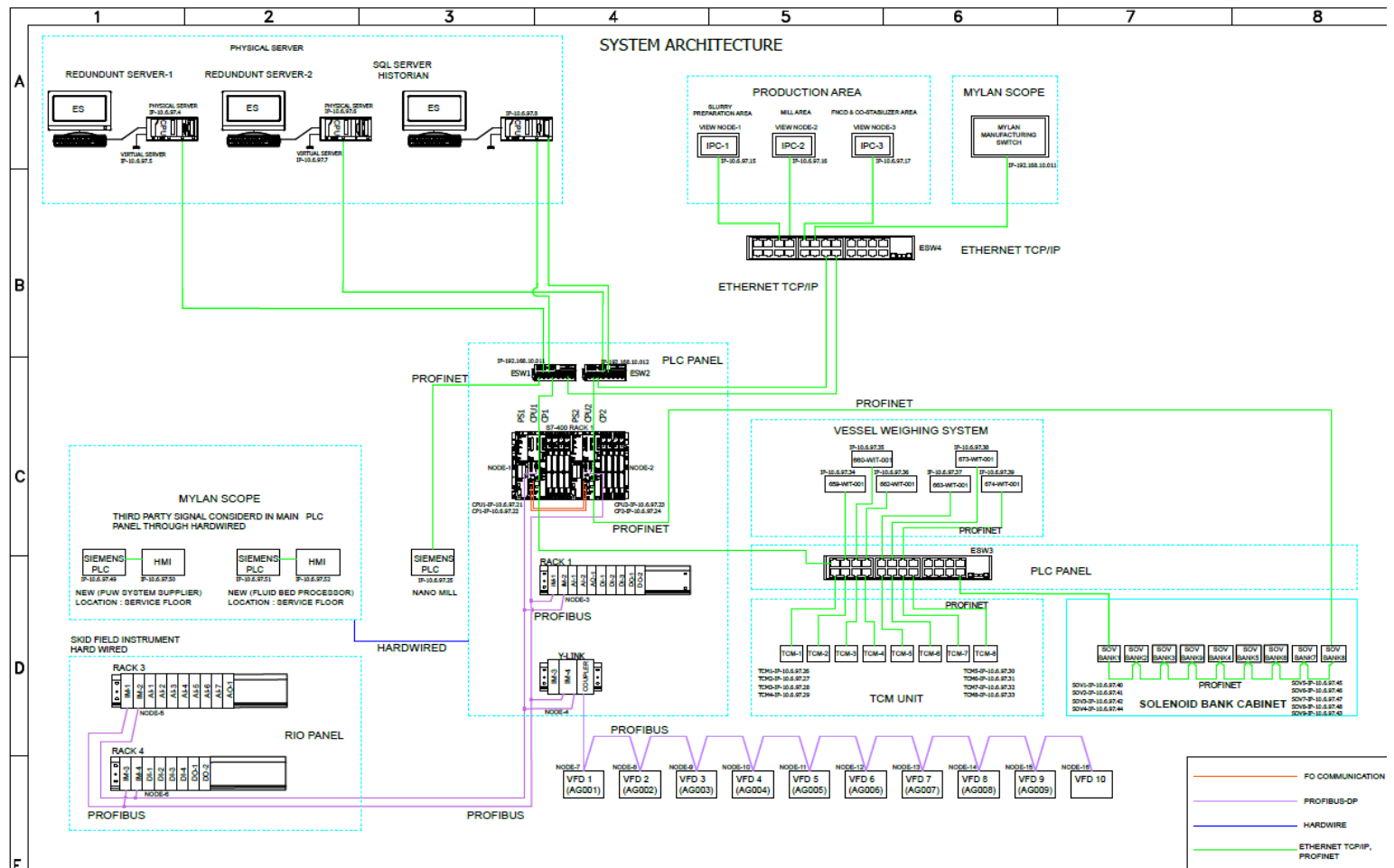
- S7-400 PLC With Hot Redundancy, Ring Topology
- Client Server Module with Server redundancy
- Process Historian Configuration
- 21 CFR Part 11 Compliance System, With Mylan Domain Integration
- Batch, Alarm and Audit Report

Automating your future, Today

Efficient Always

PHARMACEUTICAL AND LIFE SCIENCE SOLUTIONS

System Architecture - Mylan Laboratories Ltd., Nashik



Automating your future, **Today**

PHARMACEUTICAL AND LIFE SCIENCE SOLUTIONS

Major projects Executed for Reliance Life Science

Project Scope :

- Design , Engineering of Control System
- PLC Software Development for Biopharma
- SCADA development
- Commissioning
- Training

Challenge :

- To Provide Fully 21 CFR Part 11 Compliance system

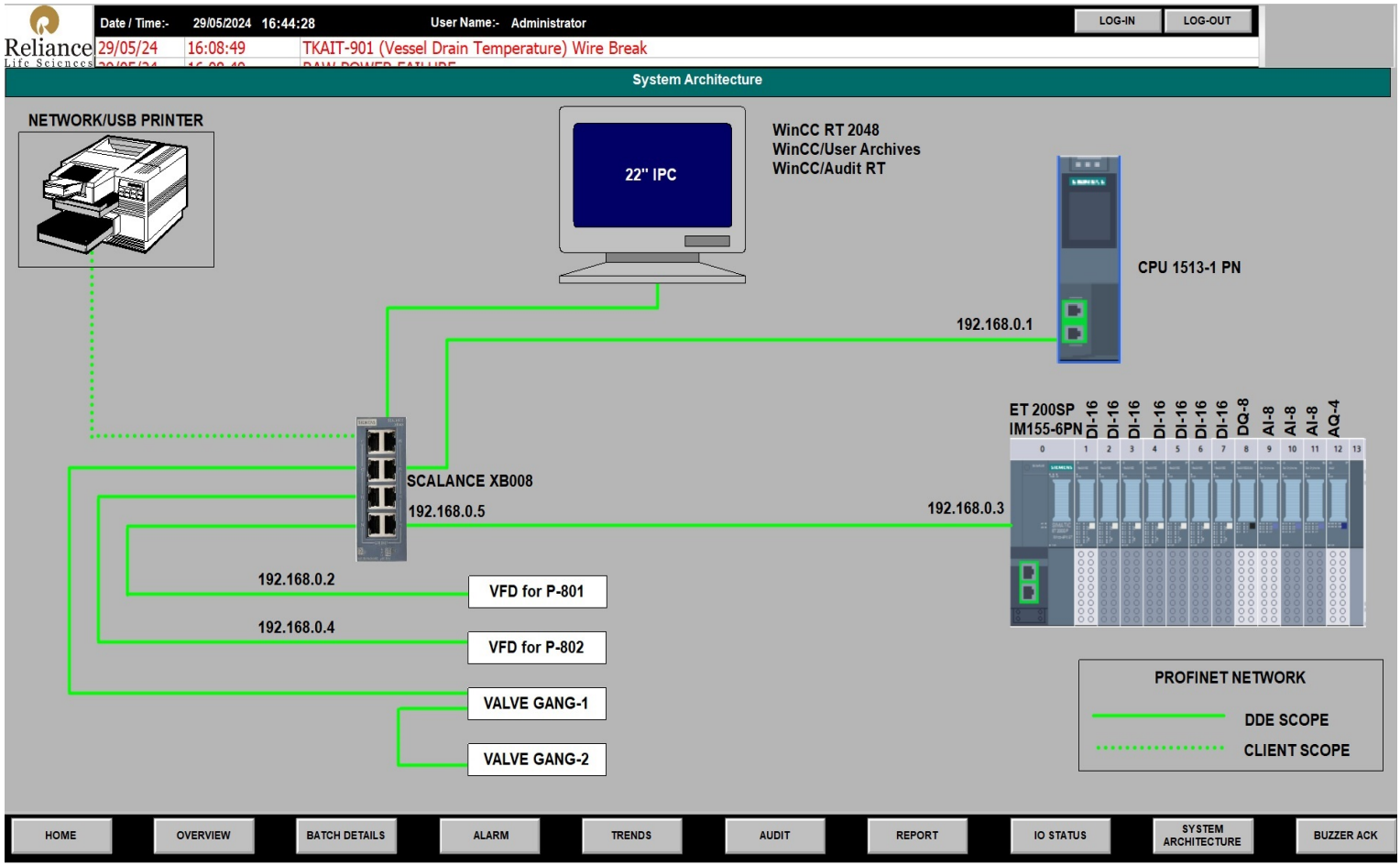
Solution :

- Automation provided using TIA18, WinCC 8.0
- Batch, Audit and Alarm Report
- GAMP Accredited System

Automating your future, Today

PHARMACEUTICAL AND LIFE SCIENCE SOLUTIONS

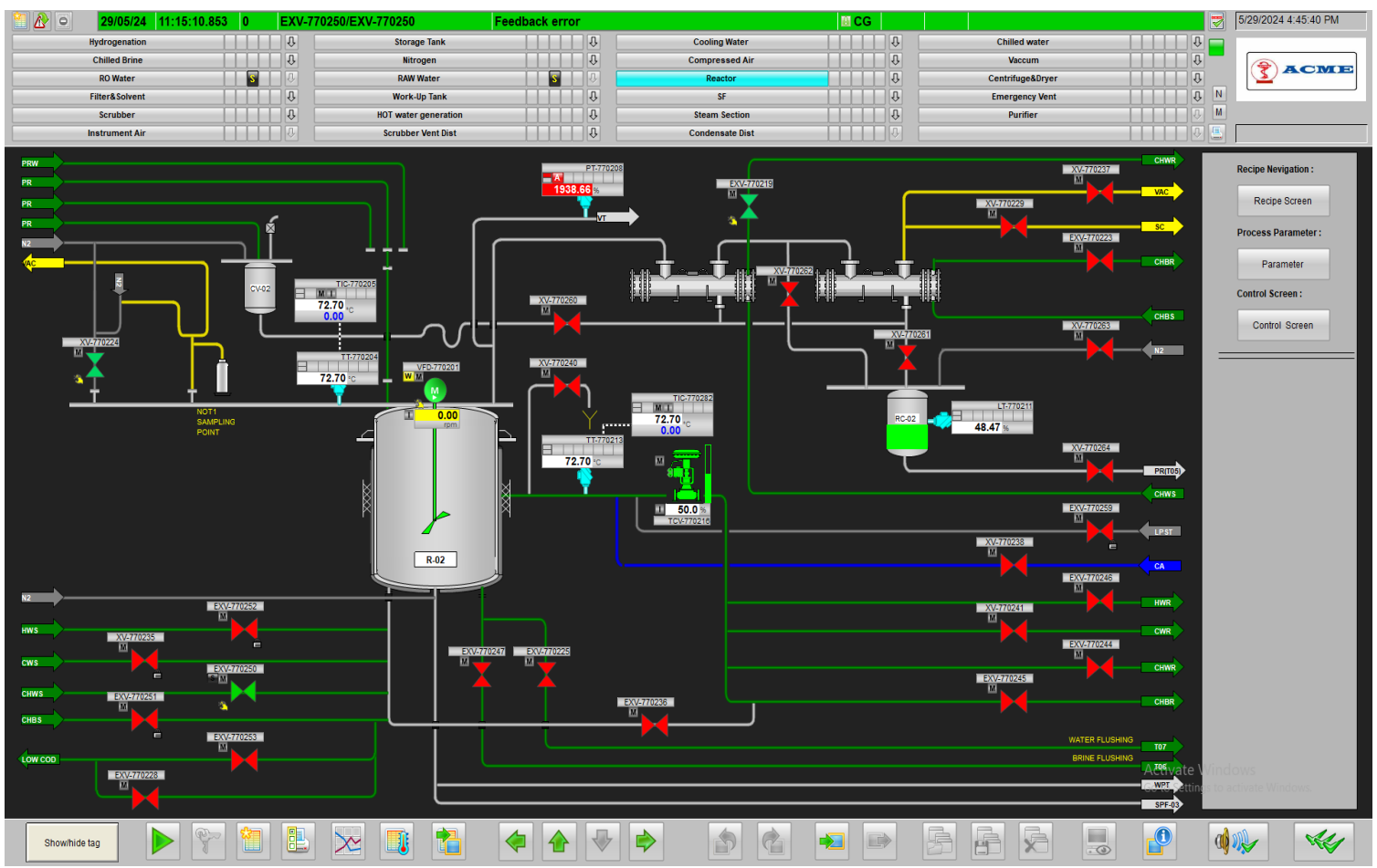
System Architecture - Reliance Life Science



Automating your future, Today

PHARMACEUTICAL AND LIFE SCIENCE SOLUTIONS

Reactor Sample Screen For API Process



Automating your future, Today

Efficient Always

PHARMACEUTICAL AND LIFE SCIENCE SOLUTIONS

Tank Farm Sample Screen For API Process

29/05/24 11:15:10.853 0 EXV-770250/EXV-770250 Feedback error CG 5/29/2024 4:49:08 PM

Hydrogenation				Storage Tank				Cooling Water				Chilled water			
Chilled Brine				Nitrogen				Compressed Air				Vacuum			
RO Water				RAW Water				Reactor				Centrifuge&Dryer			
Filter&Solvent				Work-Up Tank				SF				Emergency Vent			
Scrubber				HOT water generation				Steam Section				Purifier			
Instrument Air				Scrubber Vent Dist				Condensate Dist							

1	Transfer Level	100.0	3000.0	0.00	Litres
2	Filling Level	100.0	3000.0	0.00	Litres

TRANSFER FROM ST-01 TO FT

Start Stop Precheck:

Step Name: Idle

FILLING ST-01

Start Stop Precheck:

Step Name: Idle

1	Transfer Level	100.0	3000.0	0.00	Litres
2	Filling Level	100.0	3000.0	0.00	Litres

TRANSFER FROM ST-02 TO FT

Start Stop Precheck:

Step Name: Idle

FILLING ST-02

Start Stop Precheck:

Step Name: Idle

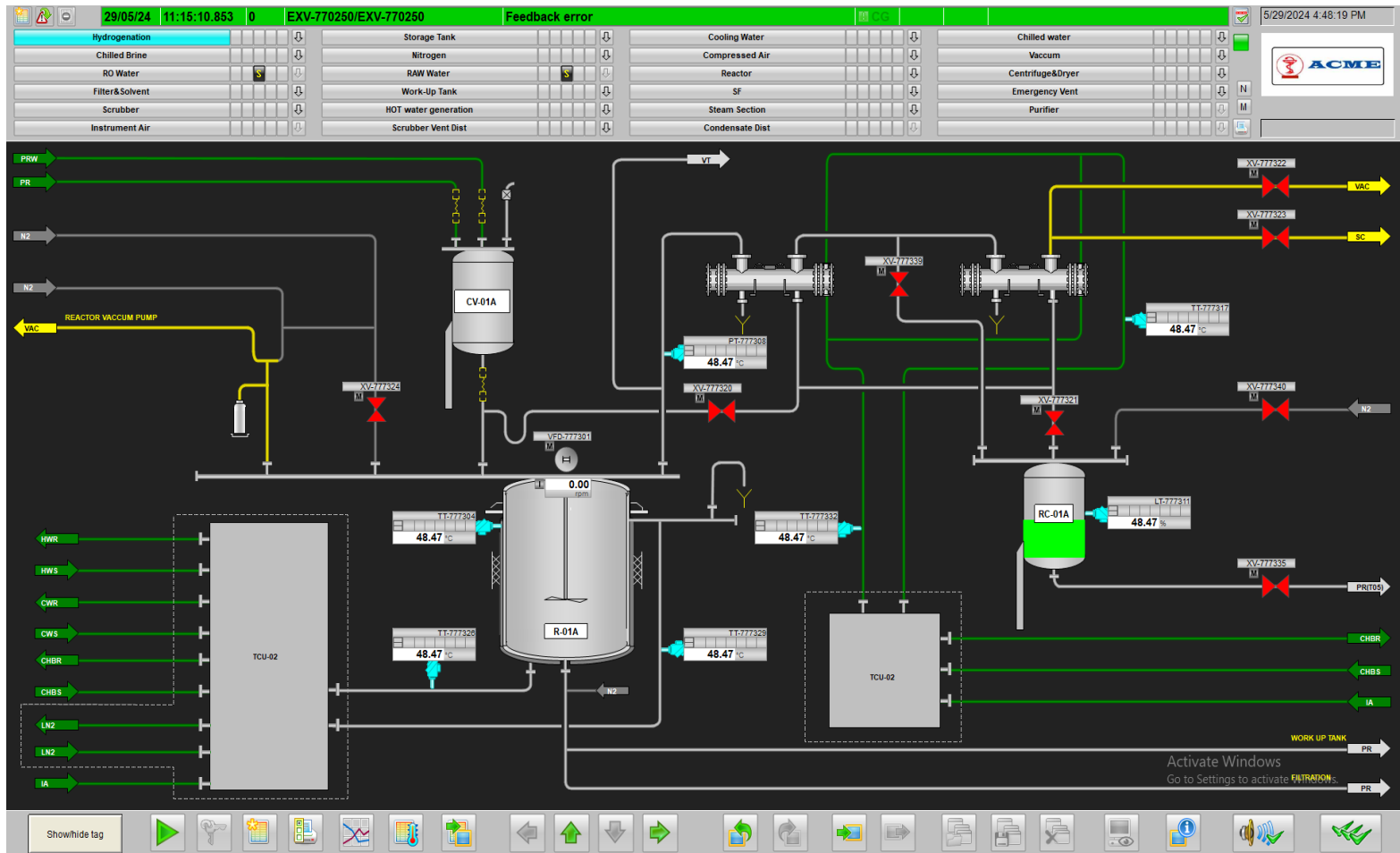
Activate Windows
Go to Settings to activate Windows.

Automating your future, Today

Efficient Always

PHARMACEUTICAL AND LIFE SCIENCE SOLUTIONS

Hydrogenation Reactor Screen

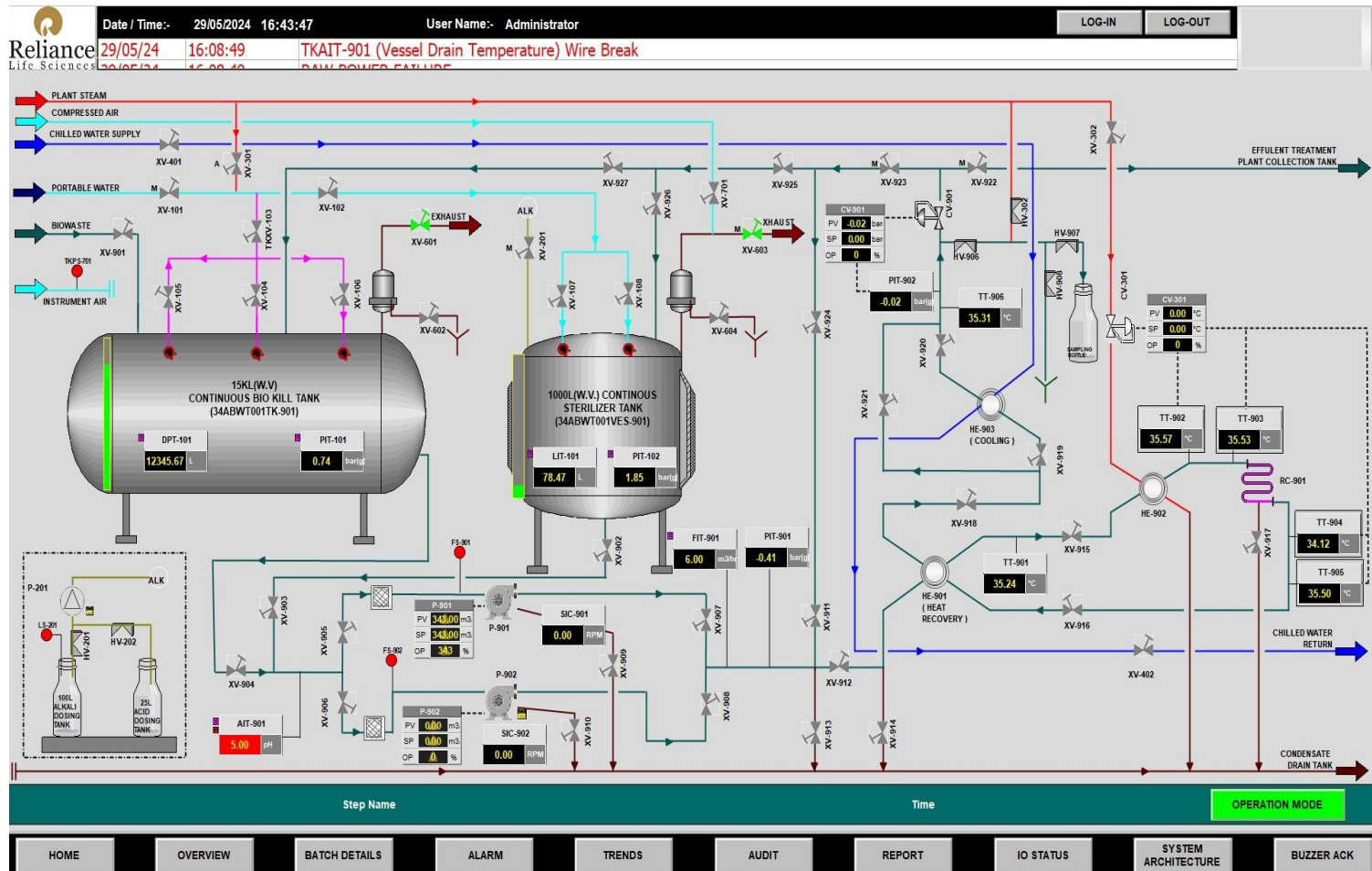


Automating your future, Today

Efficient Always

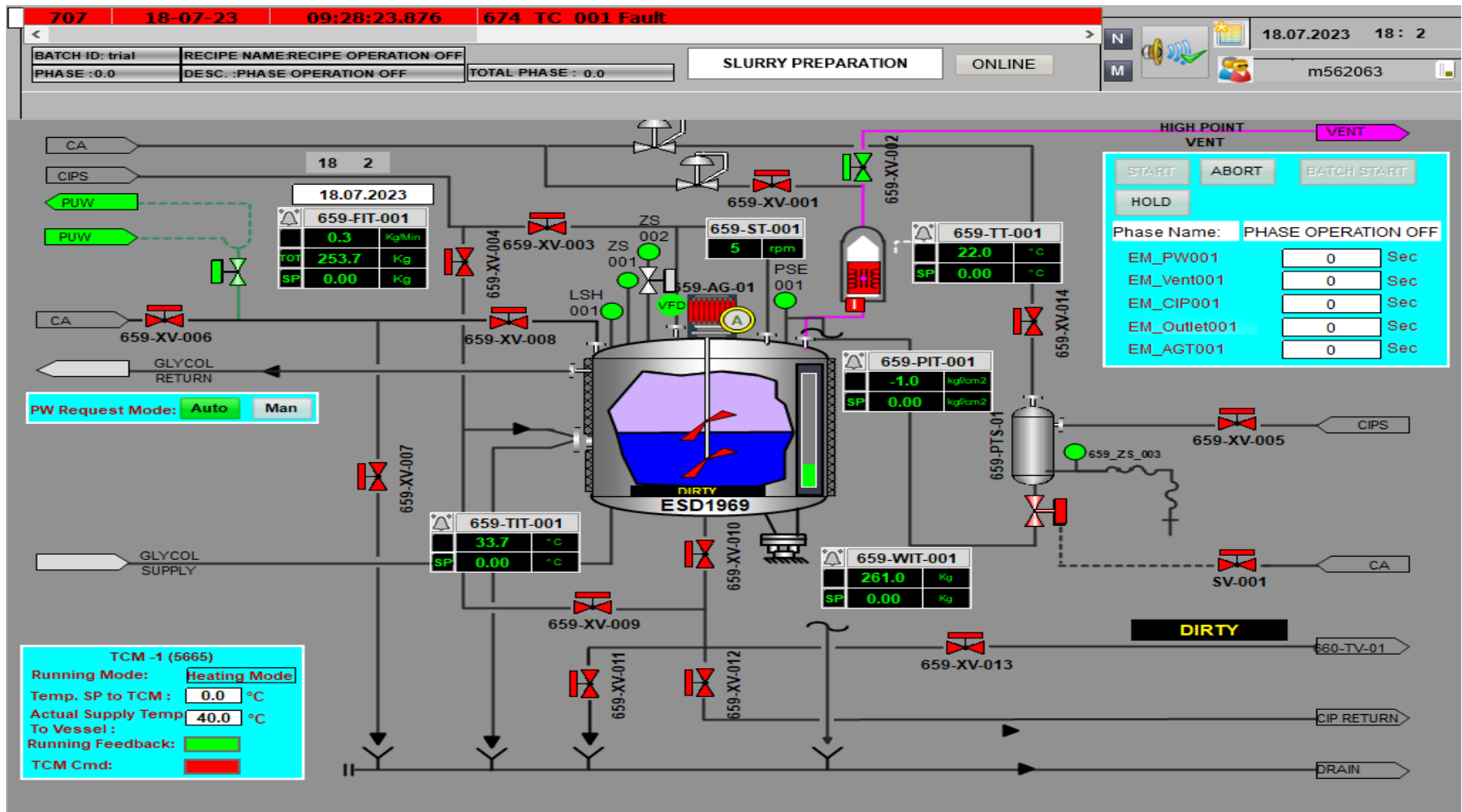
PHARMACEUTICAL AND LIFE SCIENCE SOLUTIONS

Bio Kill Tank Screen



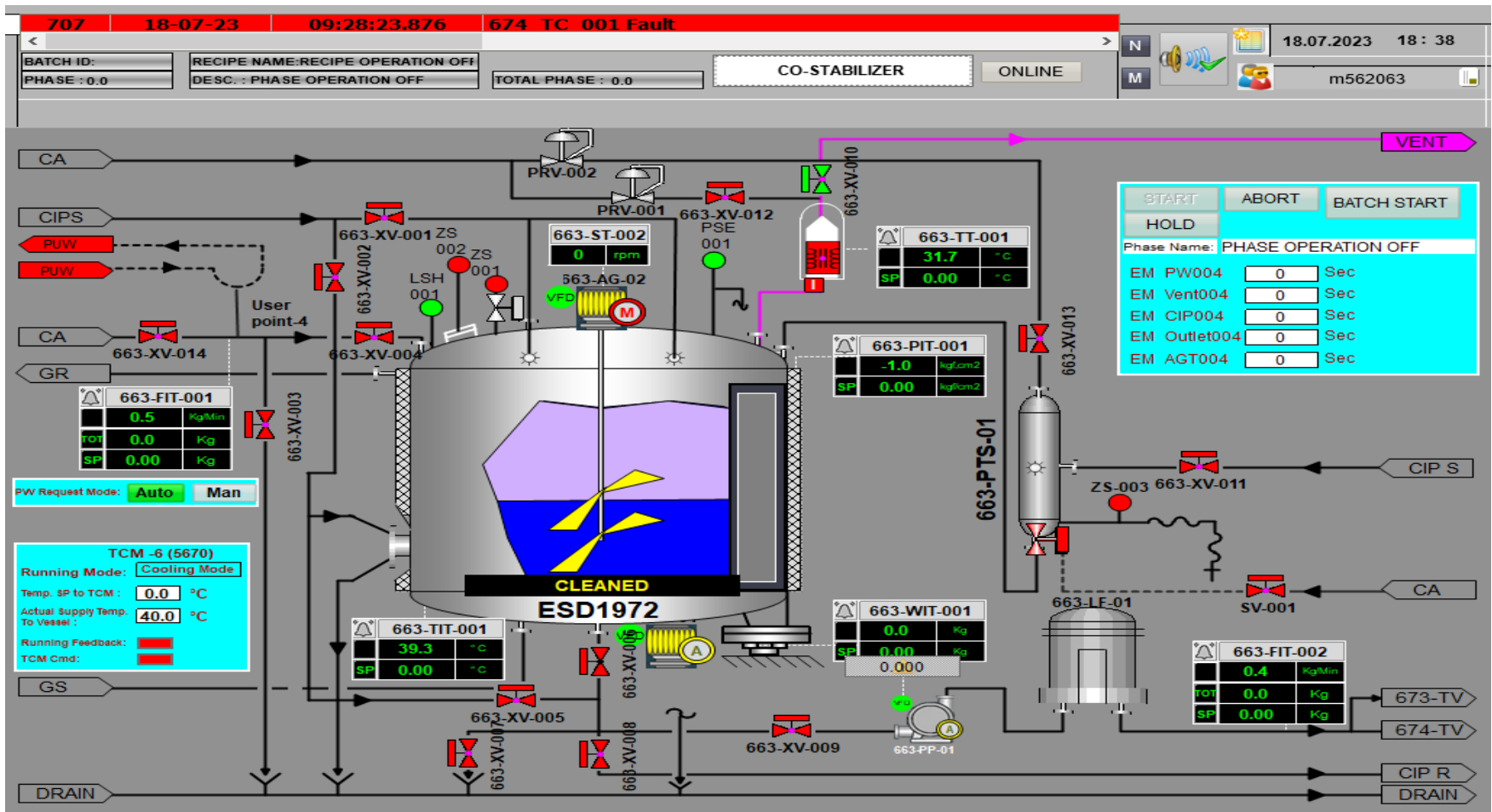
PHARMACEUTICAL AND LIFE SCIENCE SOLUTIONS

Slurry Tank Screen



PHARMACEUTICAL AND LIFE SCIENCE SOLUTIONS

Costab Tank Screen



Automating your future, Today

Efficient Always

PHARMACEUTICAL AND LIFE SCIENCE SOLUTIONS

FBD Vessel Sample Screen

ONLINE SCADA 1 SCADA 2

FBP Feed Vessel - 2

09.10.2023 15:24:57

Batch ID :
Recipe ID :
Ver : 0

Phase : 0.000
Desc. :
Total Phases : 0
Action : 0

User :

PREPARE FBPV2

FR 011
LS 857
ZS 820

ST958
P SE 355
PIT956 0.0 Bar
TIT960 0.0 °C
TCM009 -10.0 °C
WT961 0.0 Kg

AG007
TA-009(TMAV-06)

Air XV_901
FNCD Prep XV_807
Costab Prep XV_806

XV_509
XV_903 XV_904
XV_905 XV_906

XV_902
CIP Ret

XV_916 XV_913 XV_915

CIP Ret
Pro Drain

Overview Slurry Mill FNCD Co-Stab CIP Feed V-1 Feed V-2 TCM Trends Tools Glycol Clean Screen

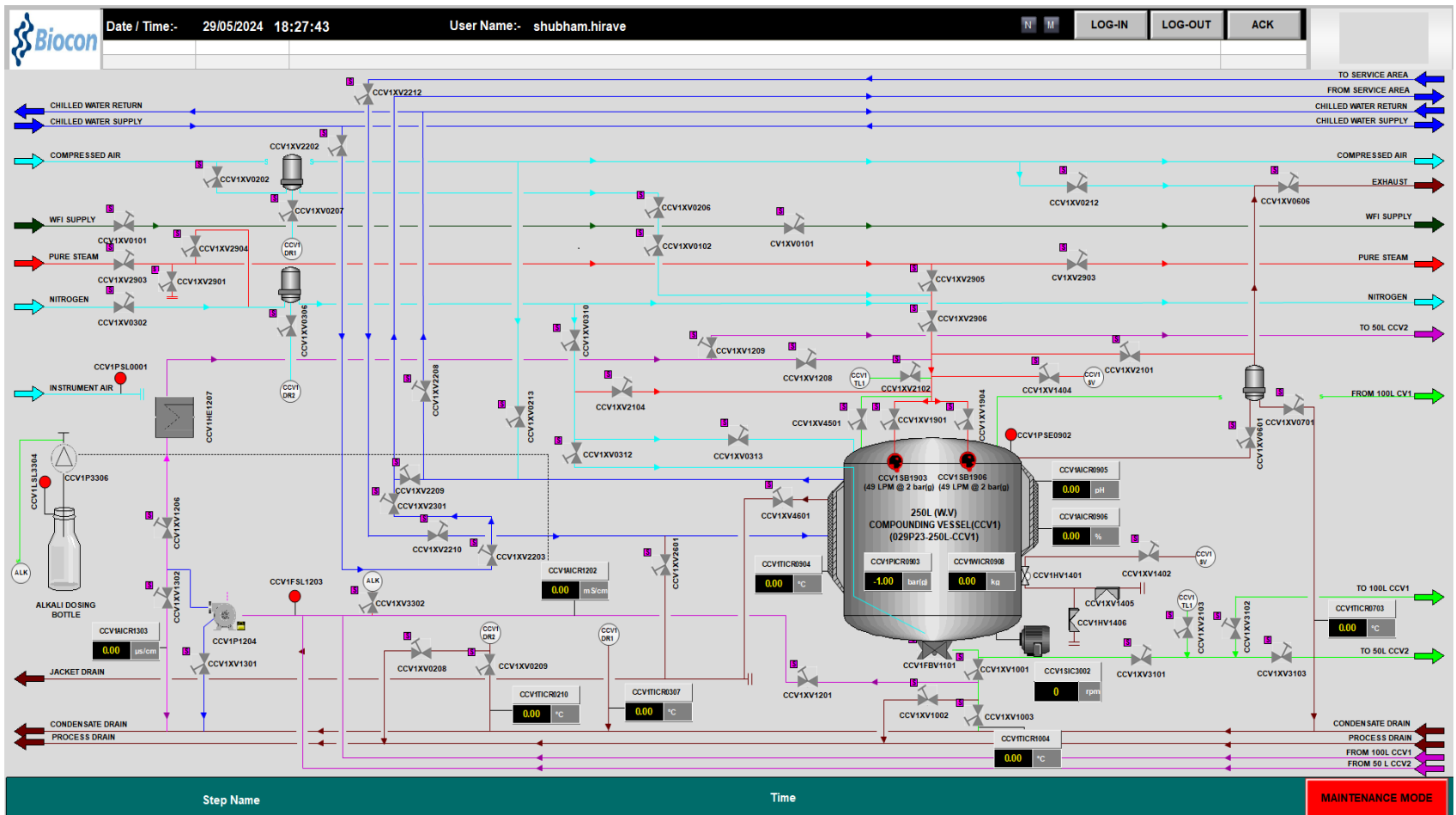
Labels

Automating your future, Today

Efficient Always

PHARMACEUTICAL AND LIFE SCIENCE SOLUTIONS

Compounding Vessel Screen – Biopharma Project



Automating your future, Today

PHARMACEUTICAL AND LIFE SCIENCE SOLUTIONS

Audit Trail Configuration Screen – Biocon Project

Date / Time:- 29/05/2024 18:28:58		User Name:- shubham.hirave		LOG-IN	LOG-OUT	ACK
Date	Time	Computer Name	Event	Source		
1	27/05/24	BIFBPCSV001	Administrator new=1 old=0	Ensure manual valve CCV1HV1401 is closed.		
2	27/05/24	BIFBPCSV001	Administrator new=1 old=0	Ensure dummies are placed wherever required.		
3	27/05/24	BIFBPCSV001	Administrator new=1 old=0	Ensure vessel is ready, availability of utilities and their pressure OK.		
4	27/05/24	BIFBPCSV001	Administrator new=1 old=0	CCV1_PHT_WITH_CV1		
5	27/05/24	BIFBPCSV001	Administrator new=0 old=1	CCV1_CIP_Hold		
6	27/05/24	BIFBPCSV001	Administrator new=1 old=0	CCV1_CIP_Hold		
7	27/05/24	BIFBPCSV001	Administrator new=0 old=101	CCV1WICR0908.Sim_Val		
8	27/05/24	BIFBPCSV001	Administrator new=1.3 old=0	CCV1TICR0904.Sim_Val		
9	27/05/24	BIFBPCSV001	Administrator new=Simulation ON old=Simulation OFF	Action Taken on:CCV1TICR0904		
10	27/05/24	BIFBPCSV001	Administrator new=1.2 old=0	CCV1AICR1202.Sim_Val		
11	27/05/24	BIFBPCSV001	Administrator new=Simulation ON old=Simulation OFF	Action Taken on:CCV1AICR1202		
12	27/05/24	BIFBPCSV001	Administrator new=101 old=0	CCV1WICR0908.Sim_Val		
13	27/05/24	BIFBPCSV001	Administrator new=0 old=251	CCV1WICR0908.Sim_Val		
14	27/05/24	BIFBPCSV001	Administrator new=251 old=0	CCV1WICR0908.Sim_Val		
15	27/05/24	BIFBPCSV001	Administrator new=Simulation ON old=Simulation OFF	Action Taken on:CCV1WICR0908		
16	27/05/24	BIFBPCSV001	Administrator new=290 old=20	CCV1WICR0908.H_SP		
17	27/05/24	BIFBPCSV001	Administrator new=300 old=30	CCV1WICR0908.HH_SP		
18	27/05/24	BIFBPCSV001	Administrator new=1 old=0	CCV1_CIP_Start_EN_INT		
19	27/05/24	BIFBPCSV001	Administrator new=1 old=0	CCV1_CIP_WITH_CV1		
20	27/05/24	BIFBPCSV001	Administrator new=1 old=0	CCV1_CIP_WITH_CV1		
21	27/05/24	BIFBPCSV001	Administrator new=1 old=0	Ensure filter cartidges are installed and dummies are placed wherever required.		
22	27/05/24	BIFBPCSV001	Administrator new=1 old=0	Ensure manual valves CCV1HV1401 is open & CCV1HV1405, CCV1HV1406 are closed		
23	27/05/24	BIFBPCSV001	Administrator new=1 old=0	Ensure manual valves CCV1HV1401, CCV1HV1406 are open & CCV1HV1405 is closed		
24	27/05/24	BIFBPCSV001	Administrator new=1 old=0	Ensure filter cartidges are installed and dummies are placed wherever required.		
25	26/05/24	DESKTOP-CCJ5K6	Administrator new=1 old=0	Ensure vessel is ready, availability of utilities and their pressure OK.		
26	26/05/24	DESKTOP-CCJ5K6	Administrator new=0 old=1	Ensure availability of utilities and their pressure OK.		
27	26/05/24	DESKTOP-CCJ5K6	Administrator new=1 old=0	Ensure filter cartidges are installed and dummies are placed wherever required.		
28	26/05/24	DESKTOP-CCJ5K6	Administrator new=0 old=1	Ensure availability of utilities and their pressure OK.		
29	26/05/24	DESKTOP-CCJ5K6	Administrator new=0 old=1	Ensure filter cartidges are installed and dummies are placed wherever required.		
30	26/05/24	DESKTOP-CCJ5K6	Administrator new=1 old=0	Ensure filter cartidges are installed and dummies are placed wherever required.		
31	26/05/24	DESKTOP-CCJ5K6	Administrator new=1 old=0	Ensure availability of utilities and their pressure OK.		
32	26/05/24	DESKTOP-CCJ5K6	Administrator new=0 old=1	Ensure filter cartidges are installed and dummies are placed wherever required.		
33	26/05/24	DESKTOP-CCJ5K6	Administrator new=0 old=1	Ensure availability of utilities and their pressure OK.		
34	26/05/24	DESKTOP-CCJ5K6	Administrator new=0 old=1	Ensure filter cartidges are installed and dummies are placed wherever required.		
35	26/05/24	DESKTOP-CCJ5K6	Administrator new=0 old=1	Ensure availability of utilities and their pressure OK.		
36	26/05/24	DESKTOP-CCJ5K6	Administrator new=0 old=1	Ensure filter cartidges are installed and dummies are placed wherever required.		
37	26/05/24	DESKTOP-CCJ5K6	Administrator new=0 old=1	Ensure filter cartidges are installed and dummies are placed wherever required.		
38	26/05/24	DESKTOP-CCJ5K6	Administrator new=0 old=1	Ensure availability of utilities and their pressure OK.		
39	26/05/24	DESKTOP-CCJ5K6	Administrator new=1 old=0	Ensure filter cartidges are installed and dummies are placed wherever required.		
40	26/05/24	DESKTOP-CCJ5K6	Administrator new=1 old=0	Ensure availability of utilities and their pressure OK.		
41	26/05/24	DESKTOP-CCJ5K6	Administrator new=0 old=1	Ensure filter cartidges are installed and dummies are placed wherever required.		
42	26/05/24	DESKTOP-CCJ5K6	Administrator new=0 old=1	Ensure availability of utilities and their pressure OK.		
43	26/05/24	DESKTOP-CCJ5K6	Administrator new=1 old=0	Ensure availability of utilities and their pressure OK.		
44	26/05/24	DESKTOP-CCJ5K6	Administrator new=0 old=1	Ensure filter cartidges are installed and dummies are placed wherever required.		
45	26/05/24	DESKTOP-CCJ5K6	Administrator new=0 old=1	Ensure availability of utilities and their pressure OK.		
46	26/05/24	DESKTOP-CCJ5K6	Administrator new=1 old=0	CCV1_IP_MSG2_Ack		
47	26/05/24	DESKTOP-CCJ5K6	Administrator new=1 old=0	CCV1_IP_Stop		
48	26/05/24	DESKTOP-CCJ5K6	Administrator new=1 old=0	CCV1_IP_Start_EN_INT		
49	26/05/24	DESKTOP-CCJ5K6	Administrator new=1 old=0	Ensure filter cartidges are installed and dummies are placed wherever required.		
50	26/05/24	DESKTOP-CCJ5K6	Administrator new=1 old=0	Ensure availability of utilities and their pressure OK.		
51	26/05/24	DESKTOP-CCJ5K6	Administrator new=1 old=0	CCV1_IP_MSG1_Ack		
52	26/05/24	DESKTOP-CCJ5K6	Administrator new=0 old=1	CCV1_IP_Resume		
53	26/05/24	DESKTOP-CCJ5K6	Administrator new=1 old=0	CCV1_IP_Resume		
54	26/05/24	DESKTOP-CCJ5K6	Administrator new=0 old=1	CCV1_IP_Hold		
55	26/05/24	DESKTOP-CCJ5K6	Administrator new=1 old=0	CCV1_IP_Hold		
56	26/05/24	DESKTOP-CCJ5K6	Administrator new=1 old=0	CCV1_IP_Start_EN_INT		