

## A Corporate Overview





---

*“We pride ourselves in our ability to successfully retain key talented team members and successfully execute projects for repeat clients.”*

*Billy Novak, PE, PMP, CEO/President*

---



## Introduction

Orion Engineers + Constructors was founded in 2001 as a full services project integrator to support the Manufacturing, Downstream/ Midstream Oil & Gas, Refining, Chemicals, Fine Chemicals, Life Sciences, Commercial, Government, Energy/Power, and Renewable Energy industry sectors.

Our project teams are comprised of all engineering disciplines, as well as professionals to support project management, project controls, procurement, document control, quality control, safety, construction management, and technical staffing. We also offer many field services, including laser scanning, surveying, ground-penetrating radar services, commissioning/start-up, operations, maintenance, procedure writing, training, HSE consulting, and turnaround planning execution.

In the last five years alone, we’ve provided engineering services to well over 100 clients. We provide program-level engineering and project execution support services for a number of industry leading

clients. We pride ourselves in our ability to successfully execute projects on budget and on time, which is reflected in our ability to obtain repeat client business. Currently, 80% of our projects are based upon repeat client business and master service agreements.

Orion’s culture and team approach not only resonates with our clients, but with our employees as well. We maintain a very low turnover rate as our average over the last five years has been just under 4%. Retaining our key talented team members is a key differentiator in our business as it allows our clients to get to know us and to expect quality deliverables every time.

As a privately owned company, we are able to be flexible with our clients in order to provide value-added services within a timely manner. We recognize the nature of executing projects with our clients for smart, value-delivering, cost-effective projects. Our services strategically supplement and support success in a turnkey or tailored format.

Established 2001

## Full-Service Engineering Offices

3515 Hurricane Bay Dr.  
Theodore, AL 36582  
251.443.5055

502 Delmas Avenue  
Pascagoula, MS 39567  
228.769.0501

726 Highlandia Drive  
Baton Rouge, LA 70810  
225.372.4729

1334 Brittmoore Rd., Ste. B  
Houston, TX 77043  
225.247.5305

## Leadership

Chief Executive Officer  
Billy Novak, P.E., PMP

Chief Financial Officer  
Shane Morris, CPA

VP, Construction Services  
Cade Carter

VP, Engineering  
Dusty Coulon, P.E.

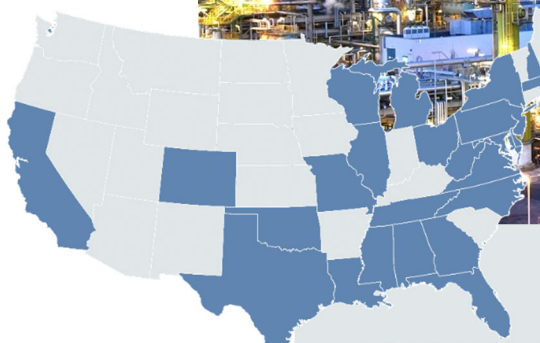
VP, Infrastructure  
Justin Hardee, P.E.

Director, Process Technology  
Joel Schwartzburg, P.E.

## Safety Compliance Memberships

ISNetworld ID No. 400-131201

Avetta ID No. 4165



We have performed projects in over  
31 states throughout the U.S.



## Key Markets

### INDUSTRIAL MANUFACTURING

Our comprehensive engineering services cover both new construction and modifications to existing manufacturing facilities.

### OIL / GAS / REFINING / POWER

We have executed engineering projects across the energy spectrum, covering upstream offshore platforms to downstream refining.

### LIFE SCIENCES

We assist pharmaceutical clients in planning and executing projects, and provide support in development, production and marketing of FDA-regulated medications.

### CHEMICALS

Our team brings technical competence that has delivered successful projects for many of the world's leading chemical companies.

### RENEWABLES

We have developed a diverse portfolio of sustainable energy project solutions that address the way energy is generated, stored, and utilized.

### METALS

We are actively providing professional project services to a number of the largest metals companies in operation in North America today.



PROCESS / CHEMICAL  
ENGINEERING

MECHANICAL ENGINEERING AND  
DESIGN

INSTRUMENTATION  
ENGINEERING AND DESIGN

CONTROL AND AUTOMATION  
ENGINEERING AND DESIGN

PIPING DESIGN

ELECTRICAL ENGINEERING AND  
DESIGN

CIVIL / STRUCTURAL  
ENGINEERING AND DESIGN

FIELD SERVICES

ENVIRONMENTAL /  
GEOTECHNICAL

PROCUREMENT

PROJECT CONTROLS

GENERAL CONTRACTING

ENGINEERING SUPPORT FOR  
CONSTRUCTION

PLANT SERVICES

EPCI (CONSTRUCTION  
INTEGRATION)

## PROCESS / CHEMICAL ENGINEERING

- Equipment Selection
- Front End Design
- Hazop Facilitation
- Heat and Material Balances
- Heat Exchanger and Column Ratings
- PFD and P&ID Development
- Process Design and Simulation
- PSV Revalidation
- Hydraulic System Review
- Debottlenecking

## MECHANICAL ENGINEERING AND DESIGN

- Chilled and Hot Water Systems
- Compressed Gas Systems
- Energy Recovery Systems
- Equipment Data Sheets
- Fire Protection
- HVAC and Industrial Ventilation
- Pipe Stress Analysis
- Laboratories
- Plumbing and Utility Systems
- Inspections
- ITP, FAT and SAT

## INSTRUMENTATION ENGINEERING AND DESIGN

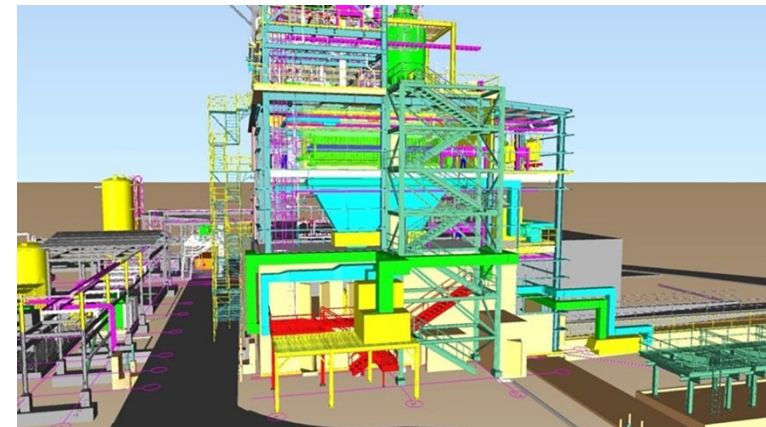
- Instrument Plans
- Cable Tray Routing Diagrams
- Instrument Specifications
- Junction Box Design, Layout and Wiring
- Panel/Rack Design, Layout and Wiring
- Integration and Compatibility Support

## CONTROL AND AUTOMATION ENGINEERING AND DESIGN

- Conceptual and Detail Design
- Configuration and Programming
- 3<sup>rd</sup> Party Vendor Package Integration
- Verification and Validation Testing
- Commissioning and Support
- Digitalization
- Networking and Cybersecurity
- Alarm Rationalization and Optimization
- System Migration

## PIPING DESIGN

- Conceptual 3-D Design
- 3-D Designs/Modeling
- Equipment Arrangements
- High Pressure Systems
- Insulation Specification
- Isometrics
- P&ID Verification
- Pipe Specifications
- Pipe Support Standards and Details
- Piping Specialty Items
- Steam Tracing and Trap Selection



## Company Services (con't)

### ELECTRICAL ENGINEERING AND DESIGN

- Cable Tray, Duct Bank, Wire-way & Conduit Systems
- Grounding
- Lighting Systems
- Lightning Protection
- Medium & Low Voltage Power Distribution
- Security Systems, CCTV, Access Control
- Arc Flash Studies

### CIVIL / STRUCTURAL ENGINEERING AND DESIGN

- Concrete Slabs on Grade and Elevated Slabs
- Concrete Footings, Mats and Pile Caps
- Retaining and Containment Walls
- Buildings, Steel Platforms and Equipment Support Systems
- Monorails and Crane Girders
- Pipe-Racks and Pile Supports
- Drainage, Grading, and Site Development
- Concrete Sumps
- Underground Piping Systems
- Firewater

### FIELD SERVICES

- Land Surveying
- Ground Penetrating Radar (GPR)
- 3D Laser Scanning / Building Information Modeling (BIM)

### ENVIRONMENTAL / GEOTECHNICAL

- Permitting
- Soil Testing

### PROCUREMENT

- Bid Package Development / RFQ's / RFP's
- Bid Evaluation and Tabulation
- Expediting
- Procurement Tracking
- Sourcing

### PROJECT CONTROLS

- TIC Estimating
- Cost Control and Forecasting
- Primavera Scheduling
- Risk Management

### GENERAL CONTRACTING

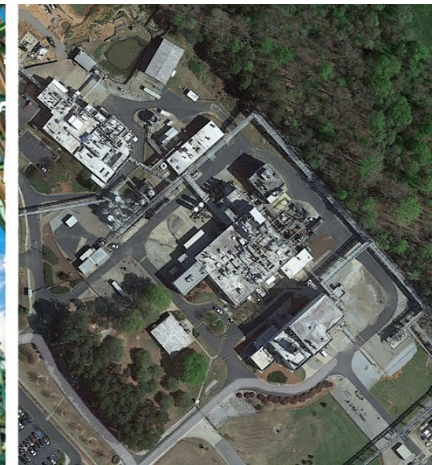
### ENGINEERING SUPPORT FOR CONSTRUCTION

### PLANT SERVICES

- Commissioning & Startup
- Operating Procedures, Training, and Maintenance Plans
- Plant Operations & Management
- Asset Reliability
- Maintenance Support

### EPCi (CONSTRUCTION INTEGRATION)

- Permitting
- Pro Forma Review
- Project Implementation
- Risk Analysis, Management, and Mitigation
- Project Planning
- Interactive Planning
- Labor Availability and Solutions
- Supplier Coordination
- Logistics
- Safety
- Inspection Services
- Quality





MOBILE, AL • BATON ROUGE, LA • PASCAGOULA, MS • HOUSTON, TX

[www.orion-eng.com](http://www.orion-eng.com)

